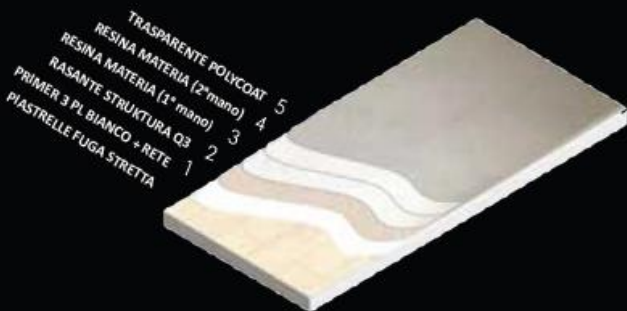




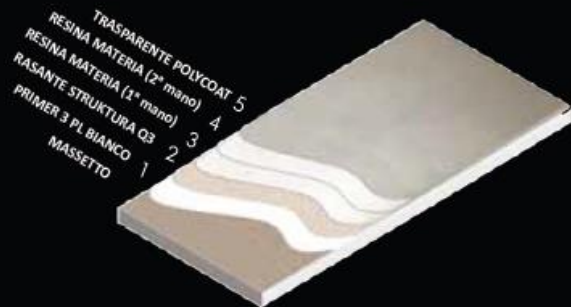
Colour Coats

Redefining Finishes

1 SCHEMA CICLO STANDARD MATERIA:
PAVIMENTAZIONE IN PIASTRELLE
A FUGA STRETTA



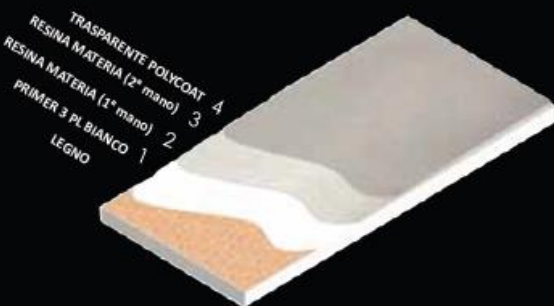
2 SCHEMA CICLO STANDARD MATERIA:
PAVIMENTAZIONE IN MASSETTO



3 SCHEMA CICLO STANDARD MATERIA:
PARETI IN CARTONGESSO



4 SCHEMA CICLO STANDARD MATERIA:
LEGNO



IMPERMEABILITA'
UNI EN
1062-3: 2008



**RESISTENZA
ALLA LUCE**
UNI EN
15187-3: 2000



**RESISTENZA
ALL' URTO**
EN 13329:2006
+ α1: 2008



**RESISTENZA
ALLE MACCHIE**
EN 438 -2: 2005
UNI 9300:1988
+ A 276: 1989



ANTISCIVOLO
METODO
B.C.R.A.
DIN 51130 (R)



USO COMMERCIALE
EN 13329:2006



**GARANZIA DI
SICUREZZA**
EN 13329:2006



**MATERIALI
RICICLATI**



**RESISTENZA
AL FUOCO**
UNI 8457:2010 / UNI 9174:2010
EN ISO 9239 - 1: 2006 / UNI EN 13501 - 1: 2009
EN ISO 11925 - 2: 2005/ UNI EN 13501 - 1: 2009



ANTIBATTERICO
ISO 22196:2011

I Nostri enti certificanti:



RP 191915/1





RESINA MATERIA

For floors, walls and furnitures

-
- *The best solution for new surfaces or for renovations*
 - *Directly on tiles or any other existing surface for floors and walls*
 - *Maximum Thickness: 2mm*
 - *Huge selection of colors and effects*
 - *Resistant to scratches*
 - *Ecological and water-based application cycle*
 - *Fast application and odorless*

1. *Resina Materia- Monokroma*

One colour, applied in one or two coats, creates a unique and minimal surface, characterized by gradual shades that depends by the pressure during the application. A biting solution but, in the same time, very soft and elegance.

Our products can be infinite colors, Here are some proposals, which are our best sellers

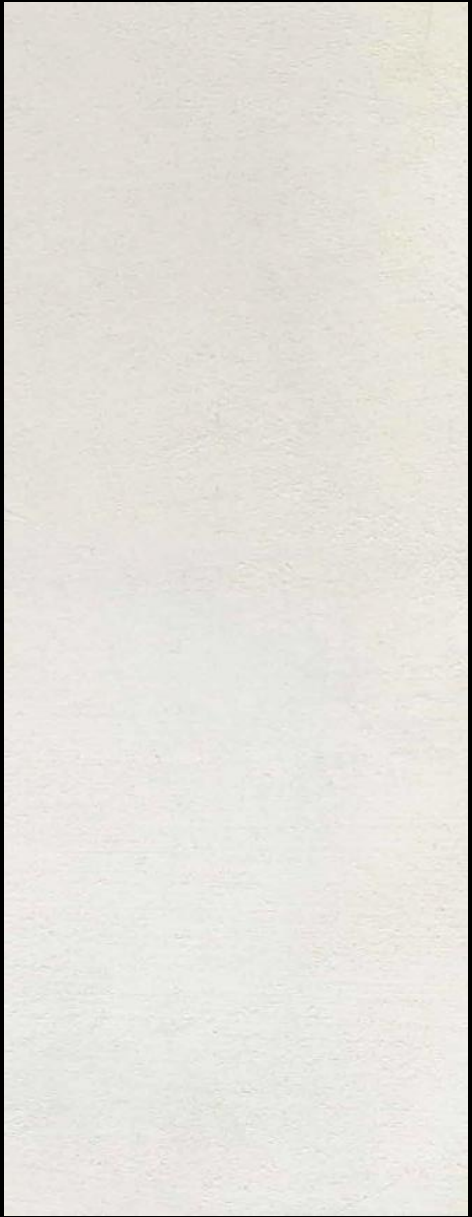
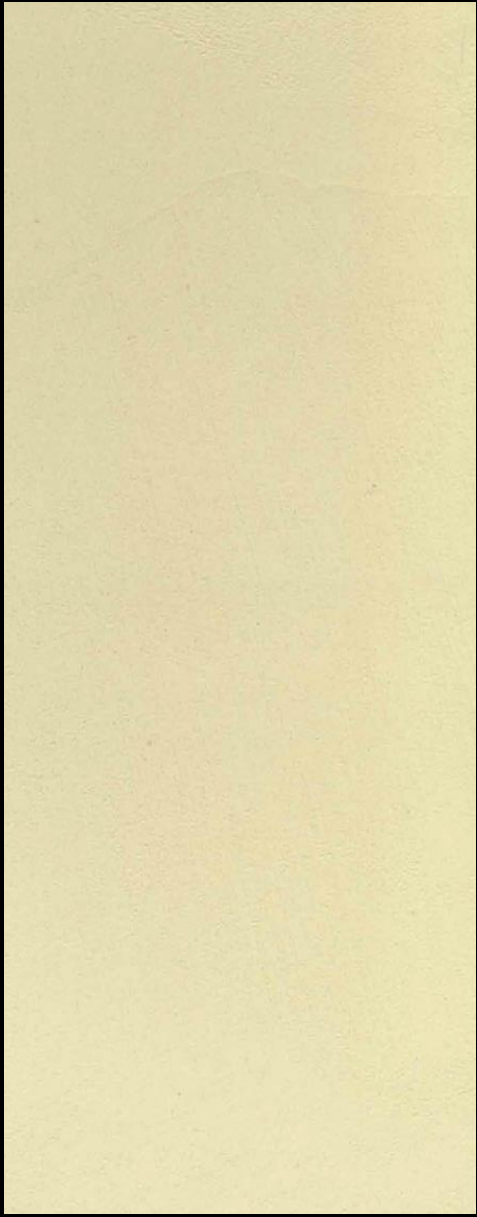
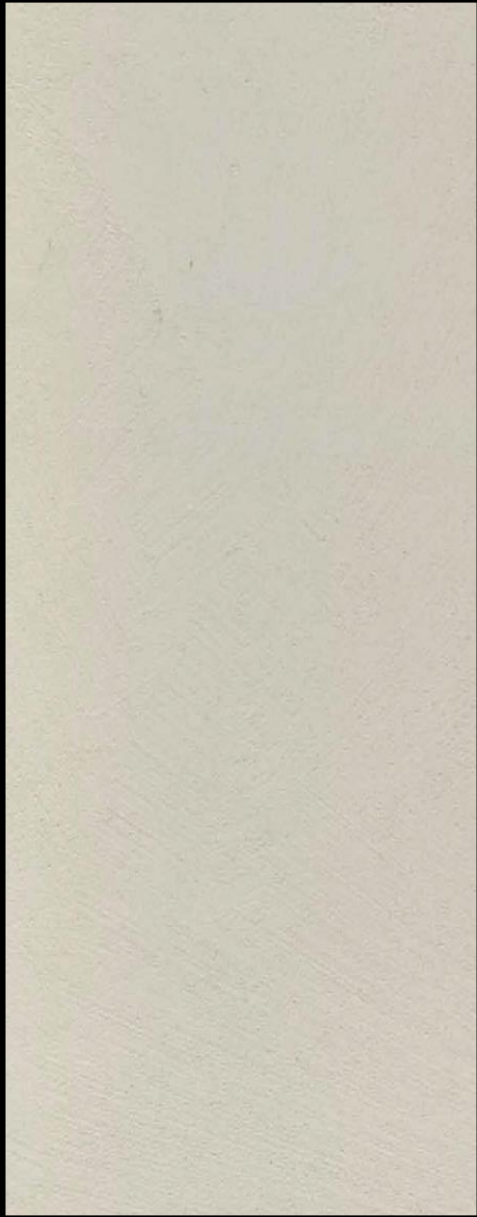




RESINA MATERIA STRUTTURATA

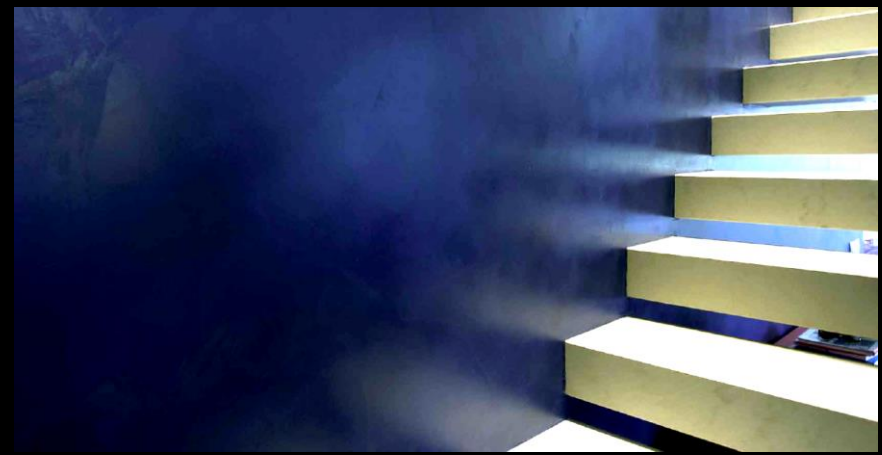
The RESIN MATERIA, applied in one or two coats, creates a unique, elegant and minimal surface, characterized by light effects and shadows that together creates. A unique and structured surface with a strong personality. The quartzes gives high resistance against washing and trampling to the surface.











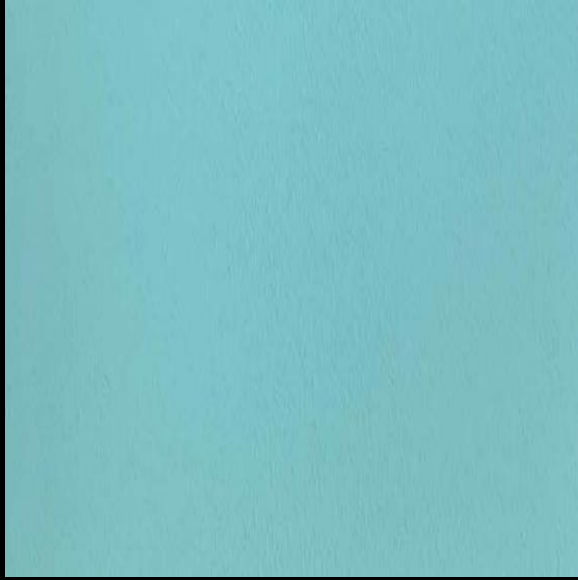
Executed projects using
Resina Materia Strutturata



RESINA MATERIA LEVIGATA

The RESIN MATERIA, applied on the surface, creating a strong and limitless effect. Shades and effects lighted by a unique combination of colours and shadows. A modern solution, with a light and fashionable texture.







Executed projects using Resina Materia Levigata



SPECIAL EFFECTS

RESIN MATERIA, used with flair and creativity allows you to create contrasts of light and colors unique and unrepeatable.

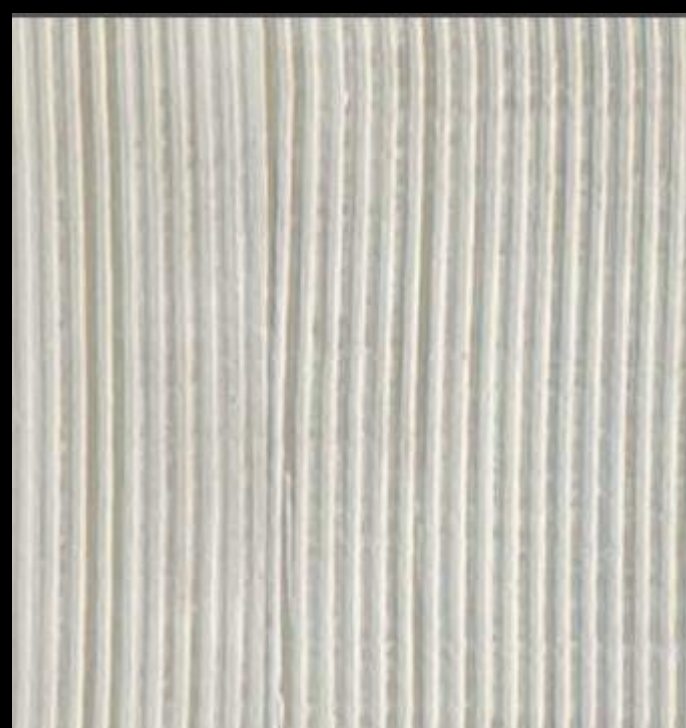
You can dream between the power of the metal scratches of MATERIA REDOXY, to the emotions and the shadows of light of MATERIA LUMINA and MATERIA STAMPATA. A selection of aggressive and strong styles for unique environments.

Effect REDOXY DEGRADATO PER PARETE



Effect REDOXY DEGRADATO PER PARETE





Effect REDOXY per pavimento





RESINA **NATURAL G40**

I CEMENTI NATURALI

Natural Resin for floors and walls

The resin NATURAL G40 is a powder resin. Thanks to its particular chemical composition based on microspheres of resin, natural quarry quartz and a percentage of cement, is the best solution to create floors and walls with natural concrete effect with a very high scratch resistance with maximum 3mm of thickness.

■ *The best solution for renovations or for new surfaces, directly on any kind of existing material*

■ **Spessore massimo: 3 mm**
Maximum Thickness: 3 mm

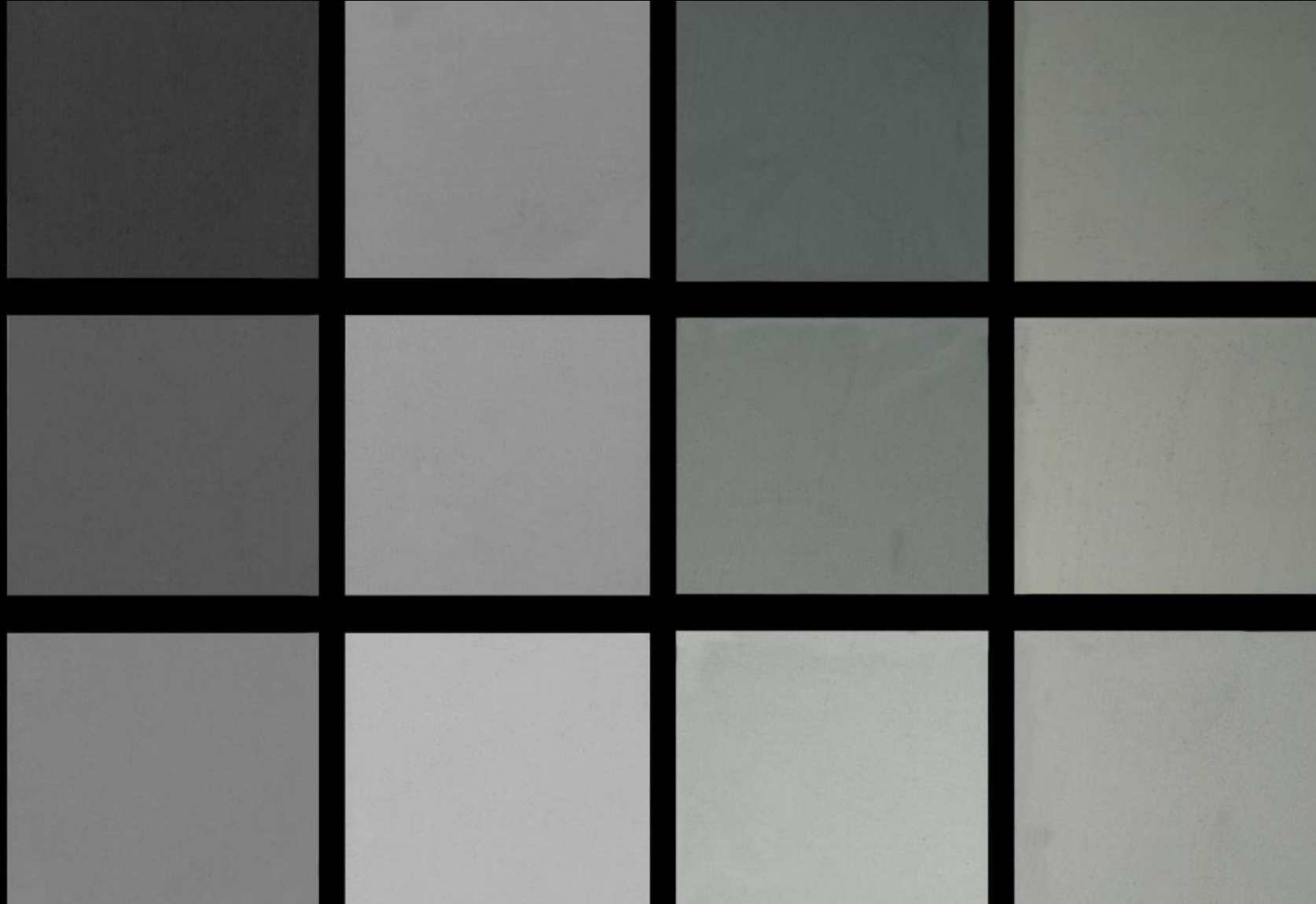
■ *A natural and water-based application cycle*

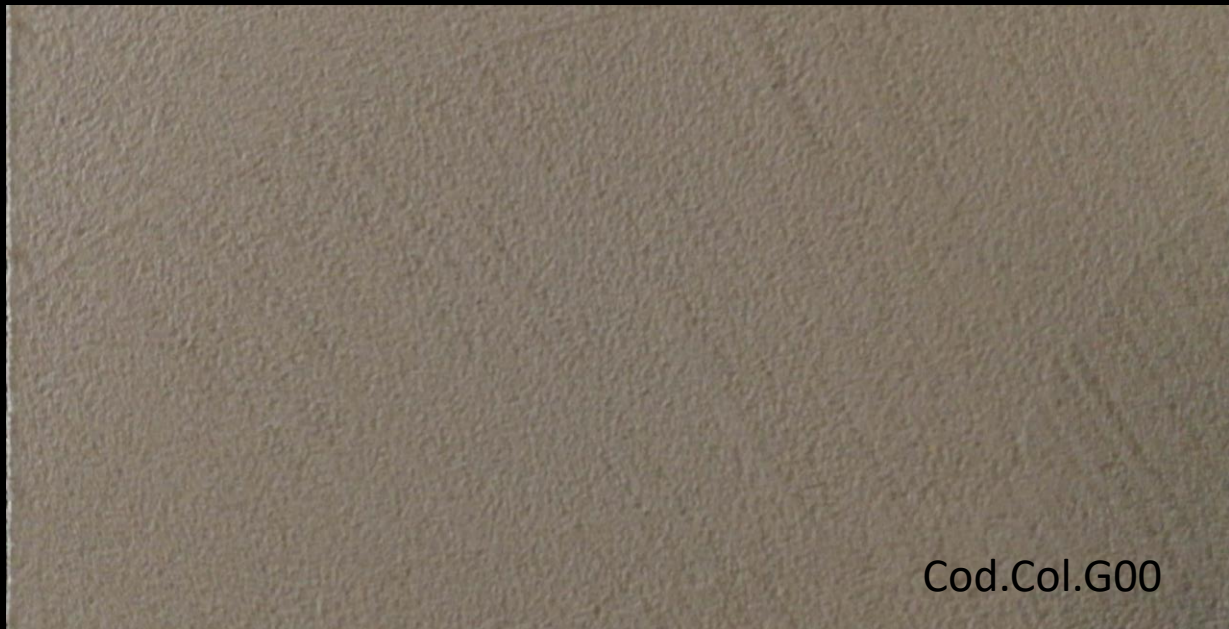
■ *Available in 12 shadows of grey*

■ **Rapida nella posa e inodore**
Fast application and odorless

Natural G40

It is available in white color and in 11 different kind of grays (the typical color of the natural concrete) and in white with the product La Malta Bianca.





Cod.Col.G00



Cod.Col.Terra del Nord 12



Cod.Col.Terra del Nord 11



Cod.Col.Terra del Nord 14



Executed projects using
Natural G40



Pastellone 2.0®

MINERALI E TERRE NATURALI

Pastellone 2.0® è disponibile in 2 Basi: BASE GRIGIA GR 00 e BASE BIANCA BC 00

Pastellone 2.0 is available in two different basis: GREY (GR 00) and WHITE (BC 00)



COD. GR 00

BASE GRIGIA



COD. BC 00

BASE BIANCA

PREPARAZIONE DEL PRODOTTO : Per utilizzare Pastellone 2.0® nelle sue 2 colorazioni base, è sufficiente aggiungere alla polvere il 35% di acqua. Miscelare accuratamente con miscelatore meccanico e applicare a spatola 2 mani di prodotto. (Vedi scheda tecnica pastellone 211.18)

HOW TO APPLY: To use Pastellone 2.0 in the two basic colours, add to the powder a 35% of water. Mix with electric mixer and apply in 2 coats (see the technical sheet number 211.18)

LE TERRE

The earths



20 gr

100 gr

300 gr

Pastellone 2.0®, in base bianca (BC 00) o in base grigia (GR 00), può essere colorato aggiungendo Le Terre Naturali di Elekta. Le Terre Naturali sono disponibili in **20 colorazioni** diverse. Possono essere utilizzate singolarmente o miscelate tra loro a proprio piacimento.

Per ottenere i colori della cartella e leggere in modo corretto il codice:

esempio di codice: **Cod. BC 21.73**

cod. **BC** (indica la base BIANCA) cod. **GR** (indica la base GRIGIA) **il numero** (indica il colore della terra es. n. 21)

il codice colore della terra sarà da utilizzare con il seguente rapporto:

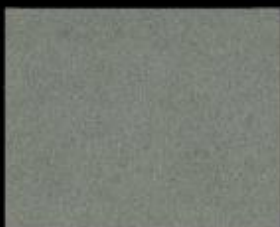
Pastellone® 15 Kg ▶ terra 300 gr

Pastellone® 5 Kg ▶ terra 100 gr

Pastellone® 1 Kg ▶ terra 20 gr



COD. GR 00
Finitura/Finishing:
Trasparente opaco



COD. GR 00
Finitura/Finishing:
Trasparente satinato



COD. COD. GR 00
Finitura/Finishing:
Trasparente lucido



Pastellone 2.0® BASE GRIGIA cod. GR 00



Pastellone 2.0® BASE BIANCA cod. BC 00





Executed projects using Pastellone

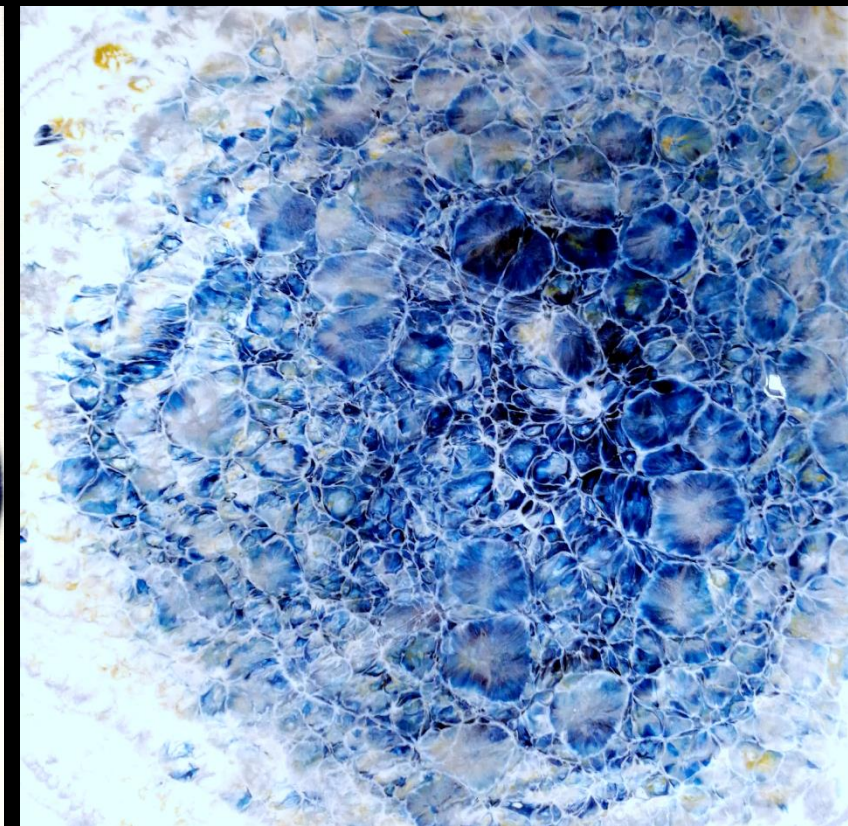
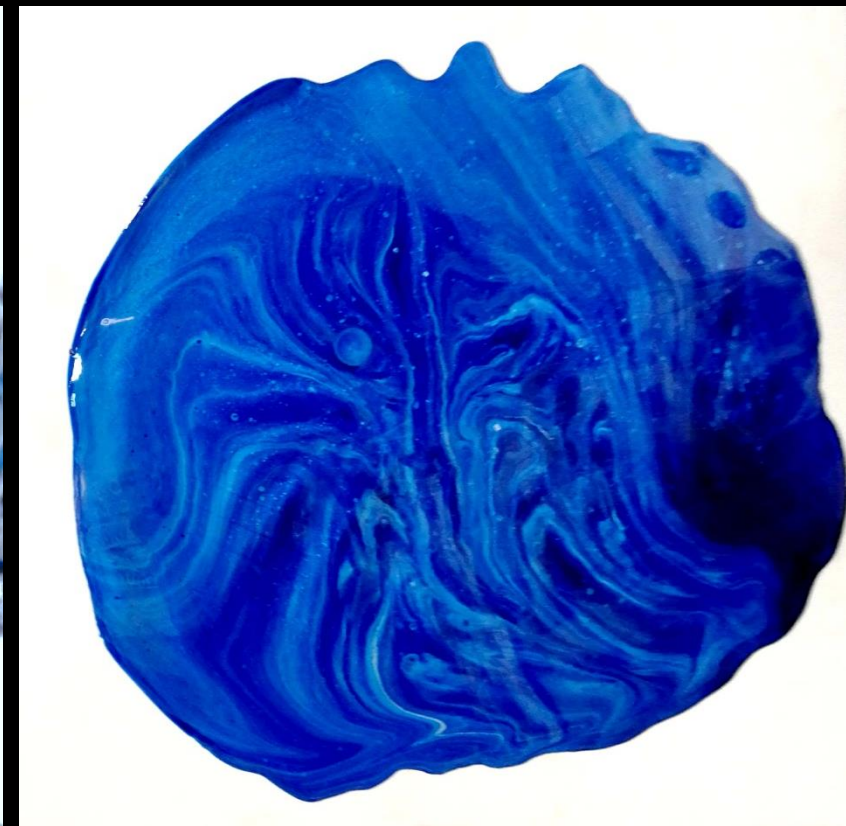
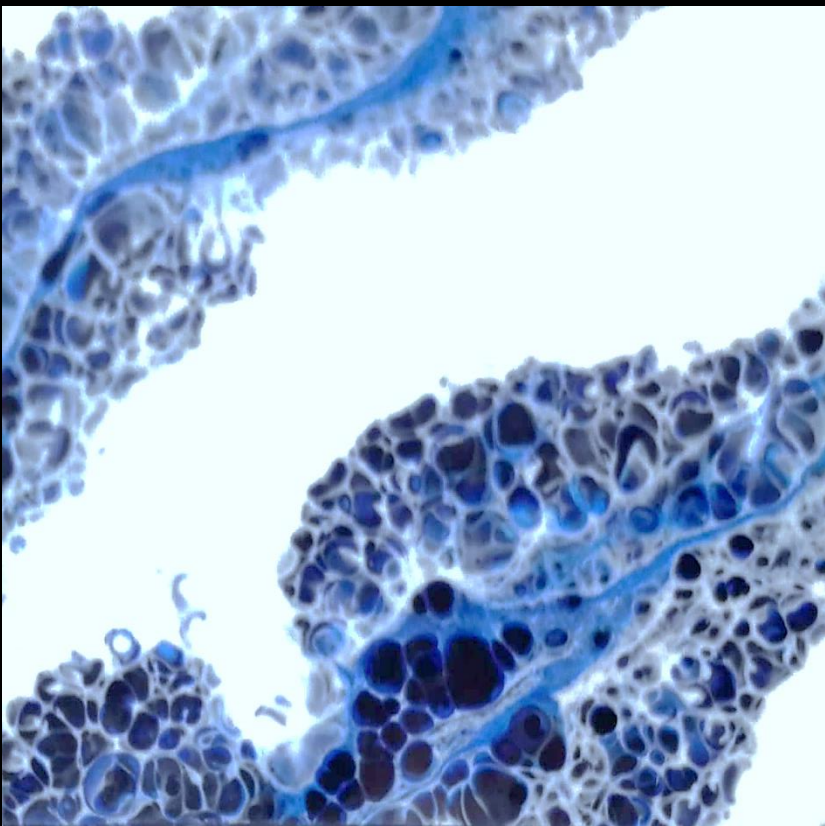
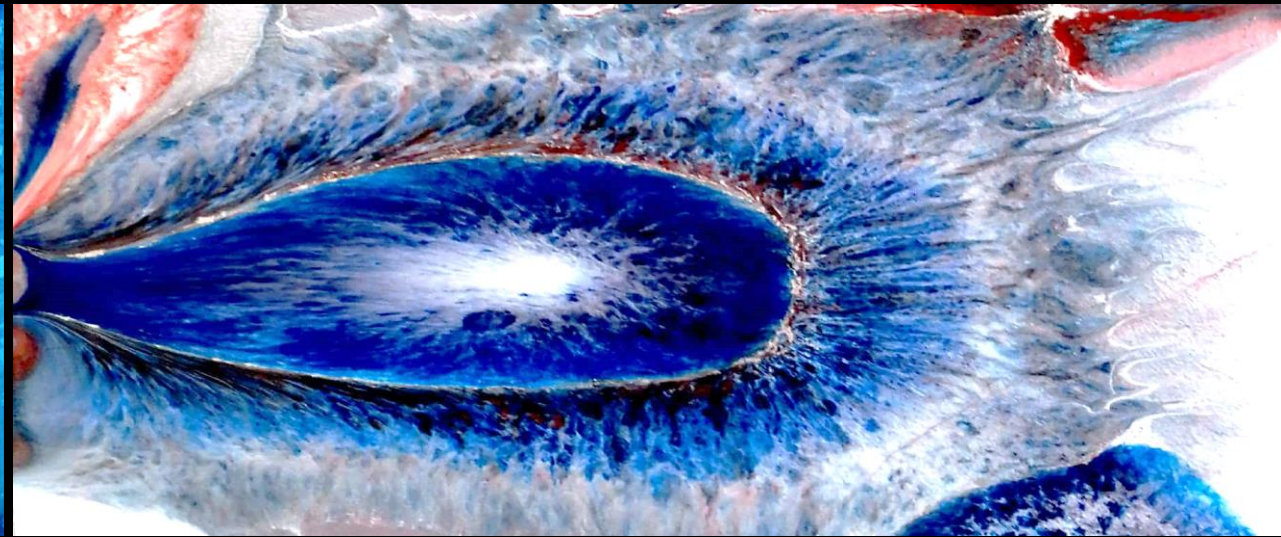
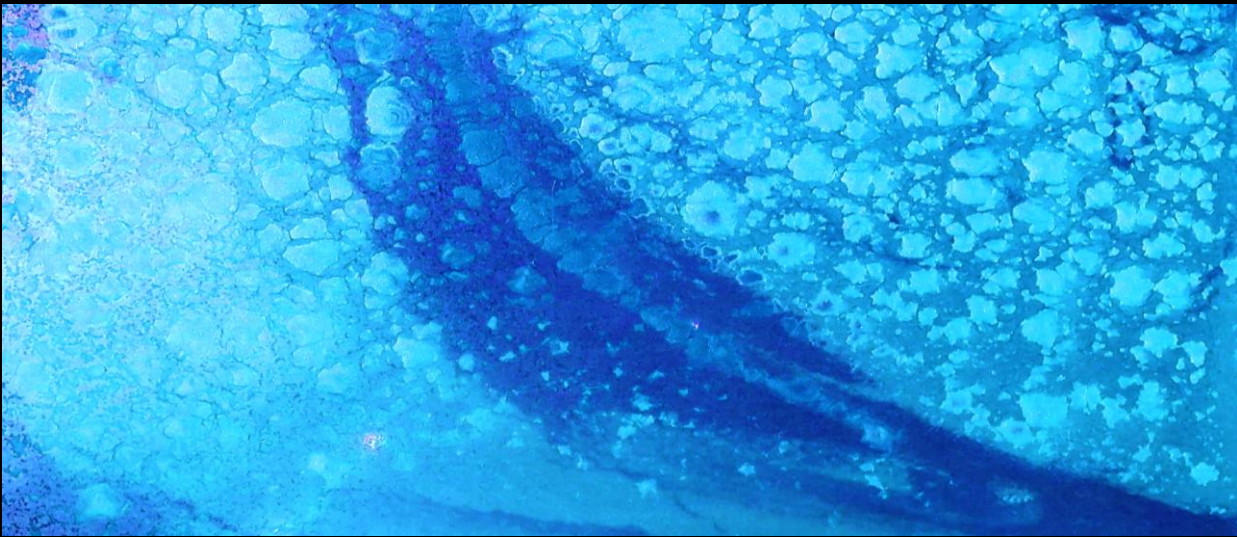


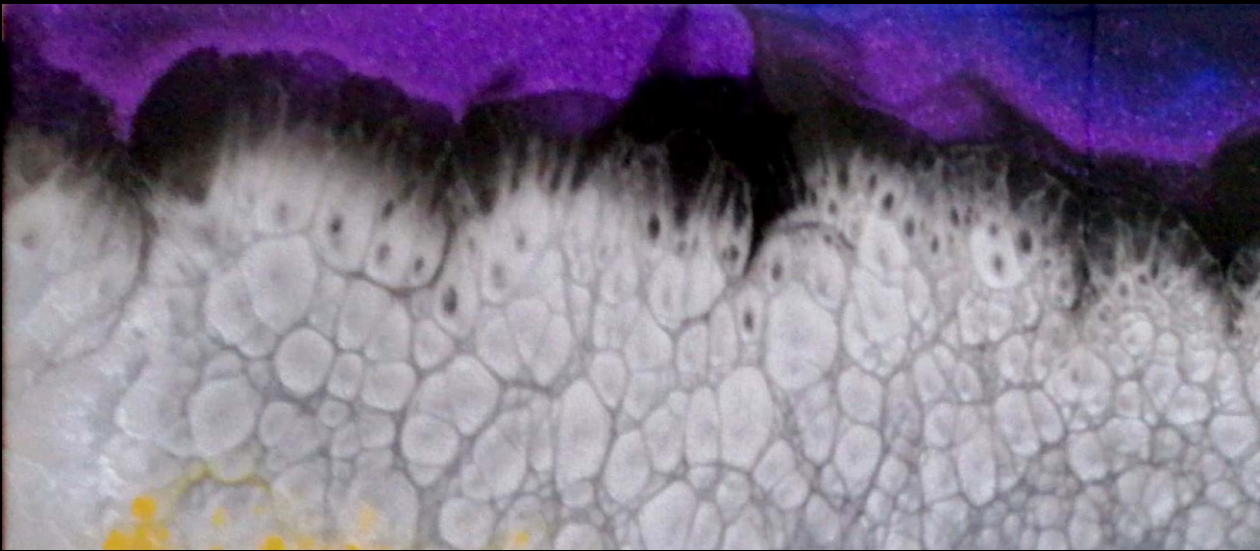
RESINA **F5000**

Resin for furnitures and floors

The RESIN F5000 is a self levelling resin, solvent-free. With its own special biopolymers, after casting on the surface, it naturally expands to create exciting art and fantasy. The RESIN F5000 can be used transparent to cover posters or small objects, or mixed with over 40 special additives and colors.

-
- Solvent-free, self-leveling resin*
 - The best choice for tables, tops, furnitures, art works and floors*
 - Create artistic and eye-catching surfaces*
 - 15 application styles and over 40 colors and special effects*

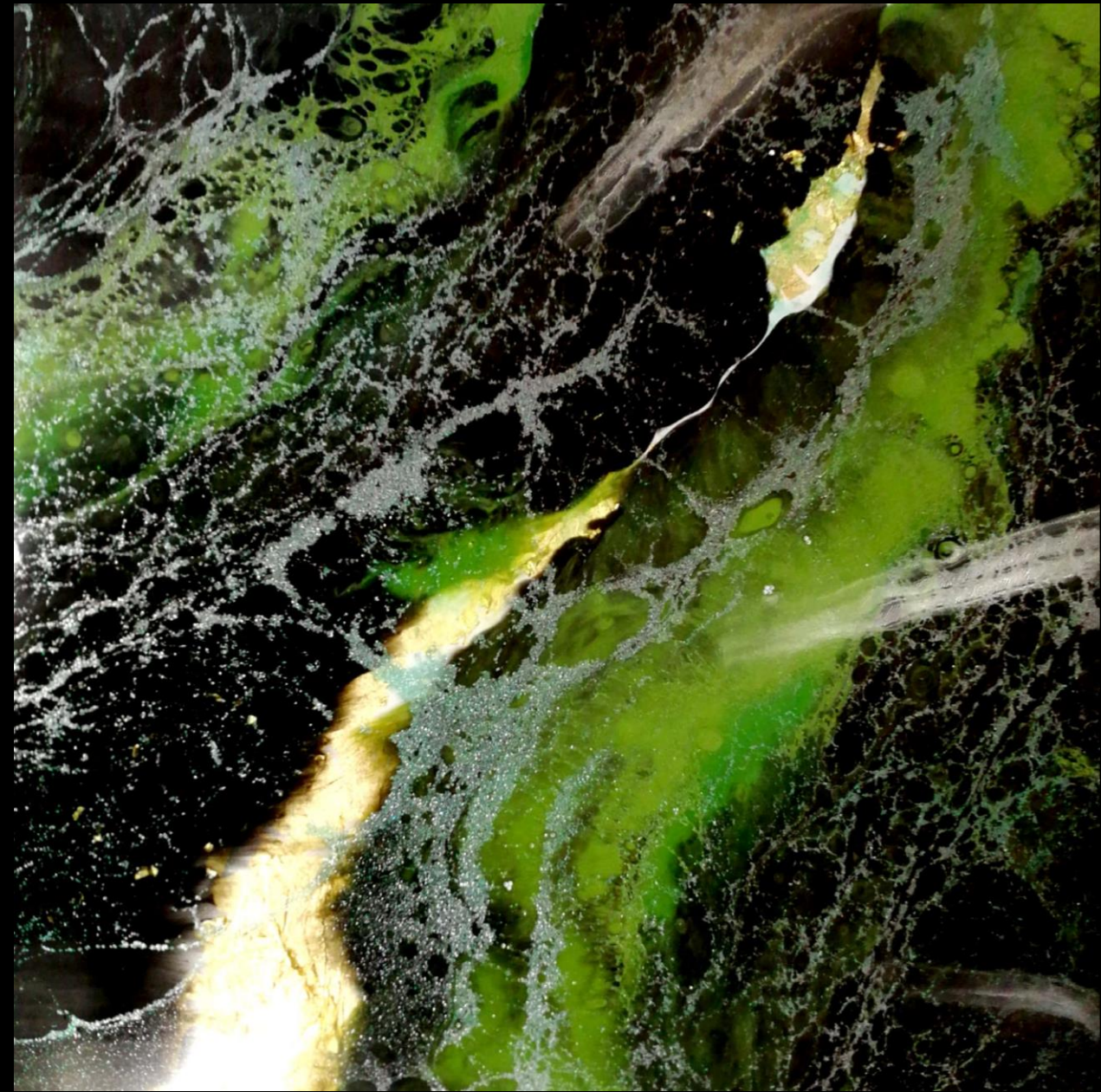
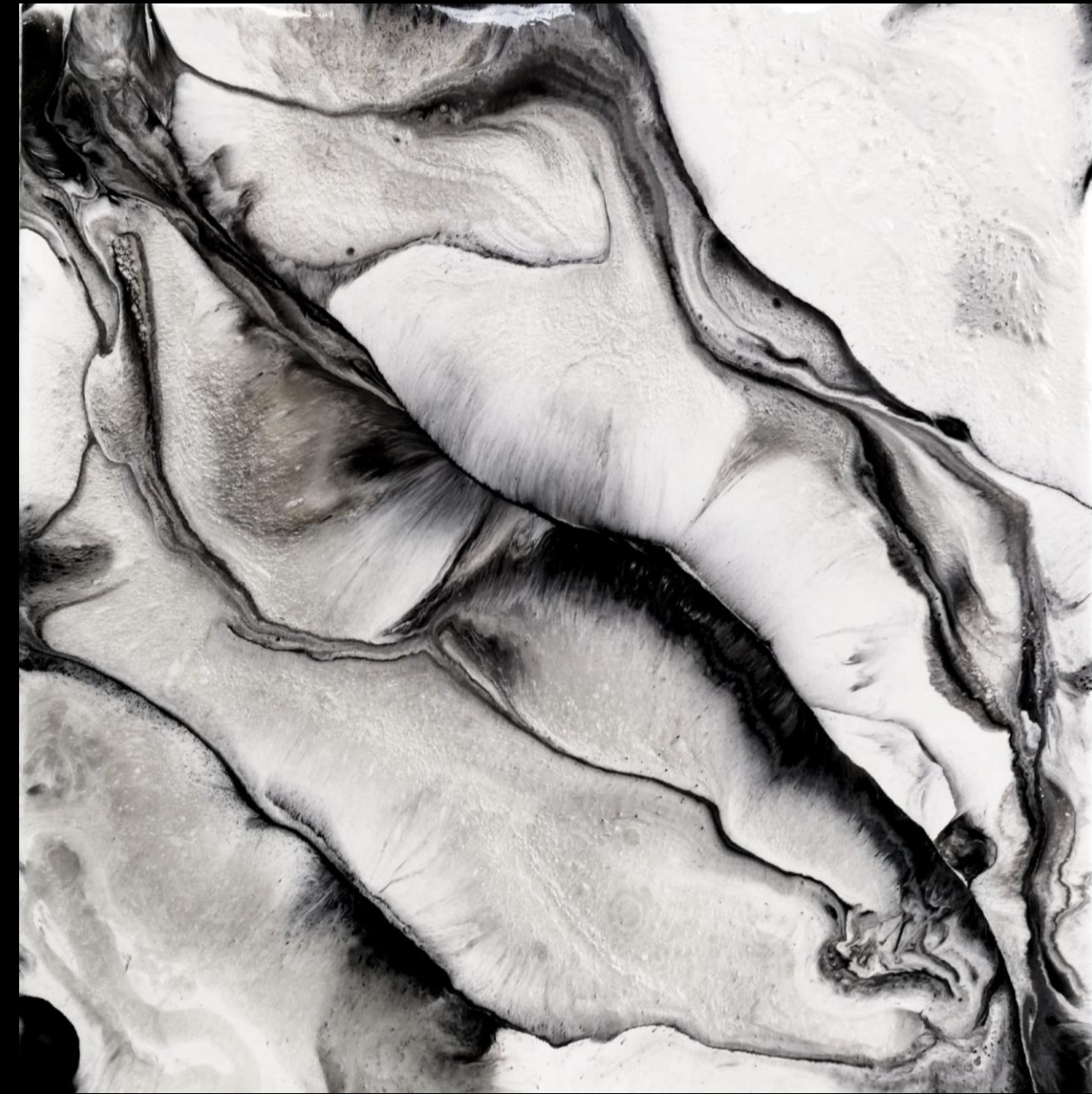


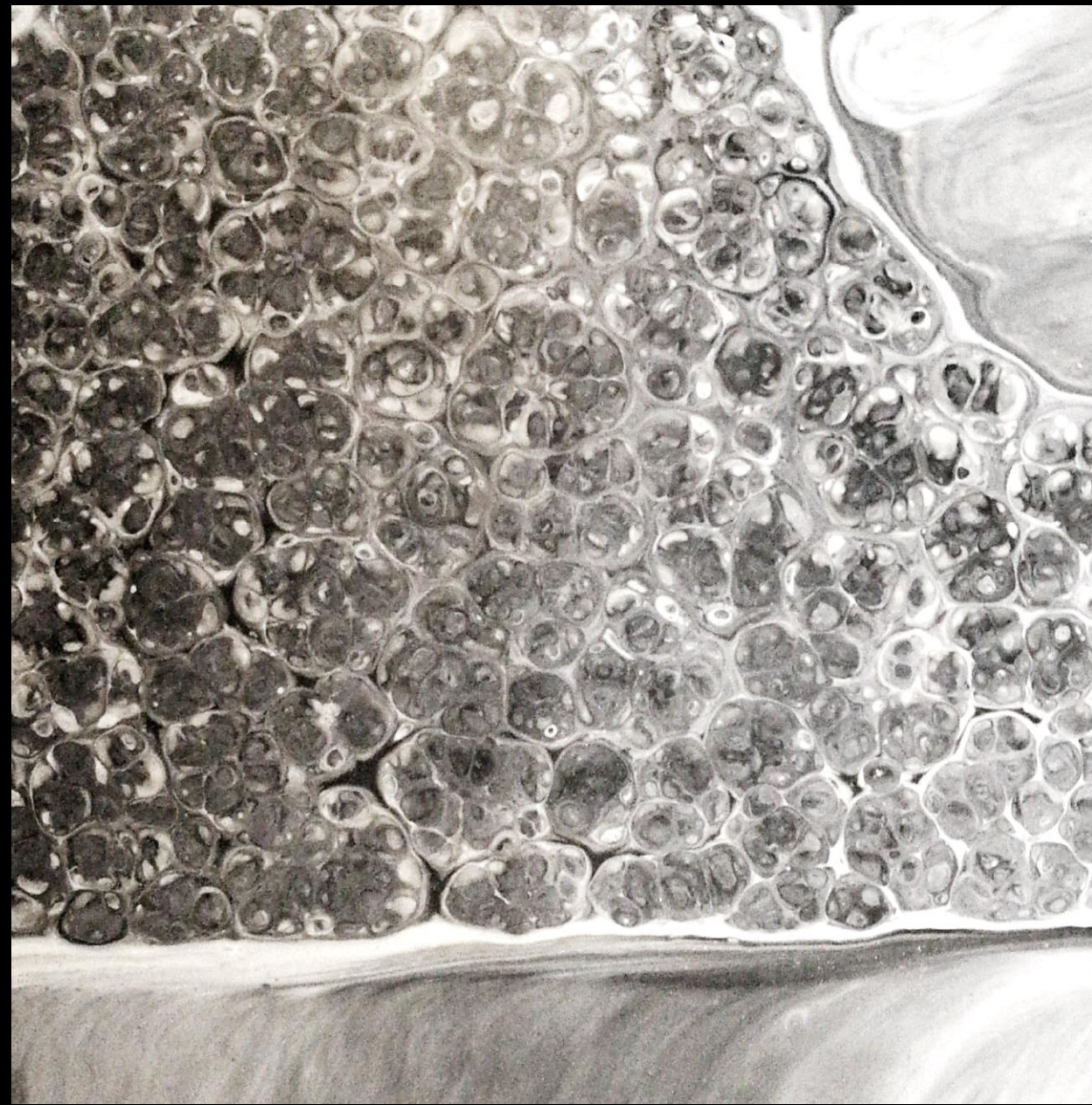
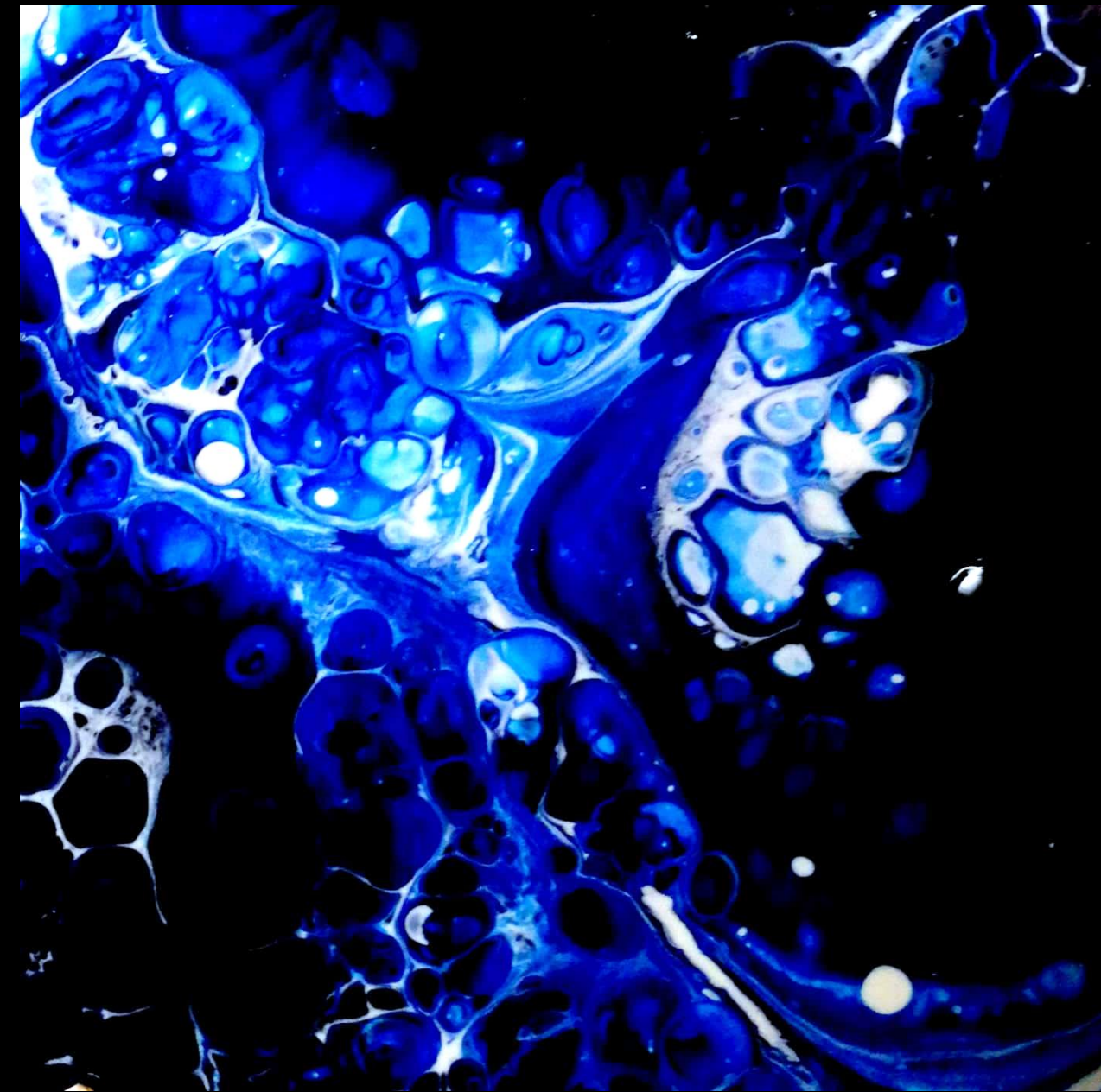



RESINA F5000




RESINA F5000





Executed projects using Resina F5000



SHABBY CHIC

The shabby chic collection, with a background of British and old reminds, gives an unlimited class to the environment. Shabby chic consists in the application of Natural Concrete G40 mixed with water. The declinations of this new collection are really a lot, thanks to the different techniques of application and thanks to the special tools that allow to reach incredible decorative effects. Timbroni with 12 different subjects, Vintage Rolls with 9 drawings, refined Pizzi that create real art works.

- *The best solution for vertical surfaces*
- *Directly on any kind of surfaces, after the application of primer*
- *Maximum Thickness: 1-3 mm*
- *Huge selection of colors*
- *Ecological and water-based application cycle*
- *Fast application and odorless*



















COD. 1010



COD. 1020



COD. 1030



COD. 1040



COD. 1050



COD. 1060



COD. 1070



COD. 1080



COD. 1090



COD. 2010



COD. 2020



COD. 2030



Rullo 298



Rullo 244



Rullo 117



Rullo 179



Rullo 189



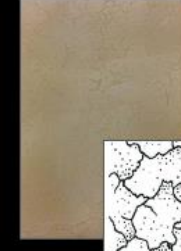
Rullo 182



Rullo 188



Rullo 199



Rullo 300

Thank you !